

# Fred Roeskestraat, Zuidas

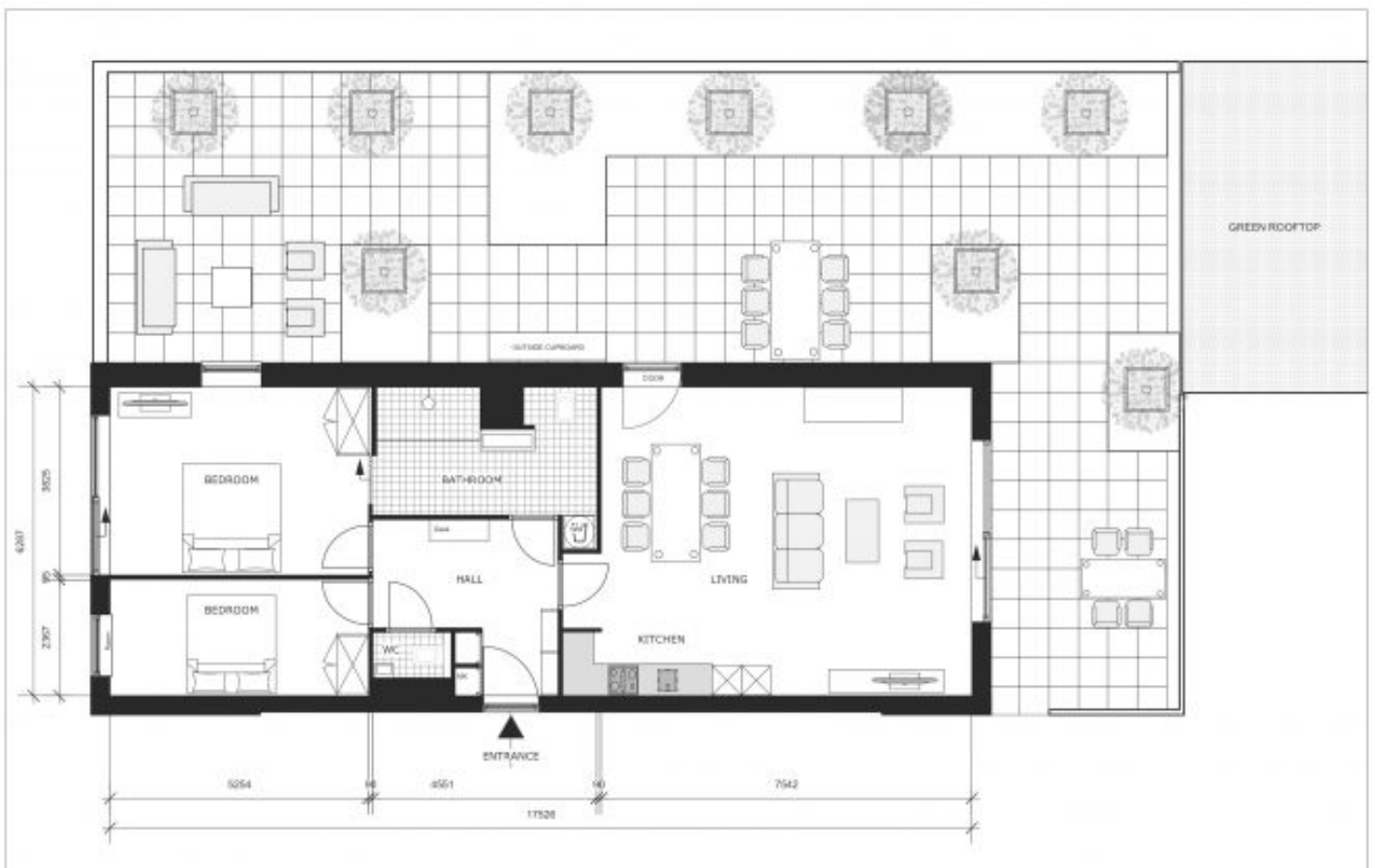
Unique terrace apartment

## € 2,950



EXPATVALLEY

Available from 1-9-2021



## Main Features

<i>Living area</i>	110 m <sup>2</sup> / 1185 ft <sup>2</sup>
<i>Bedrooms</i>	2 Large bedrooms
<i>Bathroom</i>	1 Large bathroom
<i>Kitchen</i>	Modern kitchen with appliances
<i>Furnished</i>	Yes, fully furnished
<i>Terrace</i>	48 m <sup>2</sup> / 517 ft <sup>2</sup>
<i>Elevator</i>	Yes
<i>Parking</i>	Yes, private parking space
<i>Storage</i>	Private storage room of 20 m <sup>2</sup>

## The Space

A stone's throw away from Amsterdam primary business district Zuidas stands 'de Fred'. This modern and high-end residential development comprises three apartment buildings built around a landscaped tranquil courtyard. In the furthest building, tucked away in a privacy abundant corner is this comfortable two-bedroom apartment. It boasts an impressive sized living room with open kitchen, two

spacious double bedrooms with Hästens beds, a fully equipped bathroom with walk in shower, double vanity, washer/dryer unit and extra toilet. The real treat of this particular apartment is its massive private terrace of an impressive overlooking the lush green and wide canal behind the building. The apartment comes with a private parking spot in the underground parking garage.

The area is diverse with the Zuidas business district as well as posh Zuid with its many restaurants, boutiques and Vondelpark within walking distance. The museum district and the historic city center and all its vibrant nightlife options are only a short bike ride away or can be reached with one of the tram lines nearby. The train station is just a block away and easy access to the A10, or 'Ring' highway secures a fast commute to Schiphol or other parts of the country.

Rent is including parking space, excluding service costs.

<https://www.expat-valley.com/fred-roeskestraat/>

